

# **MCEA Appendix 1**

## **Transit**

the Municipal  
Class EA  
(MCEA)  
**Start Time 1:30**



**Paul Knowles, P.Eng.**, is the MEA's MCEA Advisor. He graduated from Queen's University as a Civil Engineer and worked in the private sector for 9 years before joining the Town of Carleton Place as Town Engineer in 1989. His involvement with the Municipal Engineers Association (MEA) and the Municipal Class Environment Assessment (MCEA) began shortly thereafter. In 1993, Paul was promoted to CAO for Carleton Place but continued his engineering work and remained very active with the MEA as a Board member (2008 – 2018) and as its President in 2017,

Throughout the years, Paul has been involved in all aspects of the MCEA document, including all re-writes and amendments. Paul officially retired from Carleton Place at the end of 2018 but is continuing to work with MEA as its MCEA Advisor, delivering training programs and pursuing improvements to the MCEA process



# Topics for Today

MCEA Transit vs Ont Reg 231/06

MCEA Glossary – Transit

Appendix 1 Table C – Transit



# **EA Approval for Municipal Transit**

**MCEA – Transit  
or  
Ontario Regulation 231/08**



# **What is Ontario Regulation 231/08?**

## **Transit Reg TPAP**

**Defines Streamlined EA Approval Process**

**Project List   - 10 Projects (TPAP)  
                  - All other projects Exempt**



## **Project List in Ont Reg 231/08**

1. Culvert repair or replacement where the capacity of the culvert or drainage area is changed;
2. Reconstruction of water crossing where the reconstructed facility will not be for the same purpose, use, capacity and at the same location as the facility being reconstructed (capacity refers to hydraulic capacity);
3. Construction of new stations in or adjacent to residential land-use or an environmentally-sensitive area including natural heritage features, cultural heritage and archaeological resources, recreational or other sensitive land-uses;



## **Project List in Ont Reg 231/08**

4. Construction of new passenger pick-up/drop off areas (e.g. Kiss and Ride), and park and ride lots in or adjacent to residential land-use or an environmentally- sensitive area including natural heritage features, cultural heritage and archaeological resources, recreational or other sensitive land-uses;
5. Construction of new grade separation;
6. Construction of new storage facilities in or adjacent to residential land-use or an environmentally-sensitive area including natural heritage features, cultural heritage and archaeological resources, recreational or other sensitive land-uses;





## **Project List in Ont Reg 231/08**

7. Reconstruction, widening or expansion of linear components of a transit system where the reconstructed facility will not be for the same purpose, use, and at the same location as the facility being reconstructed (e.g. a change from an existing Reserved Bus Lane (RBL) that is separated from general purpose lanes by signage and pavement markings only to a Reserved Bus Lane (RBL) in a right- of-way that is physically separated from general purpose lanes).
8. Widening of an existing road to create new transit lanes for bus or light rail;





## **Project List in Ont Reg 231/08**

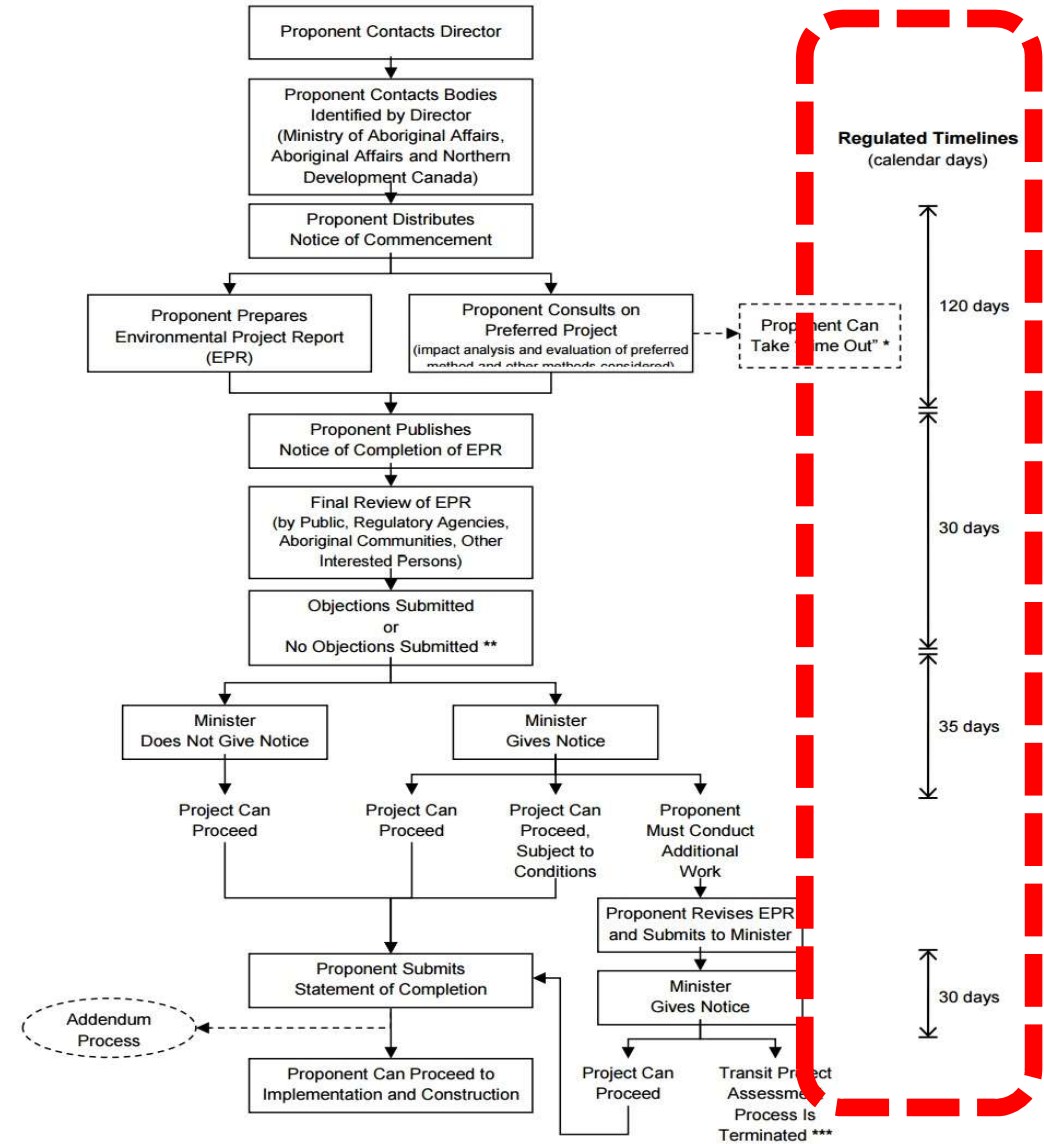
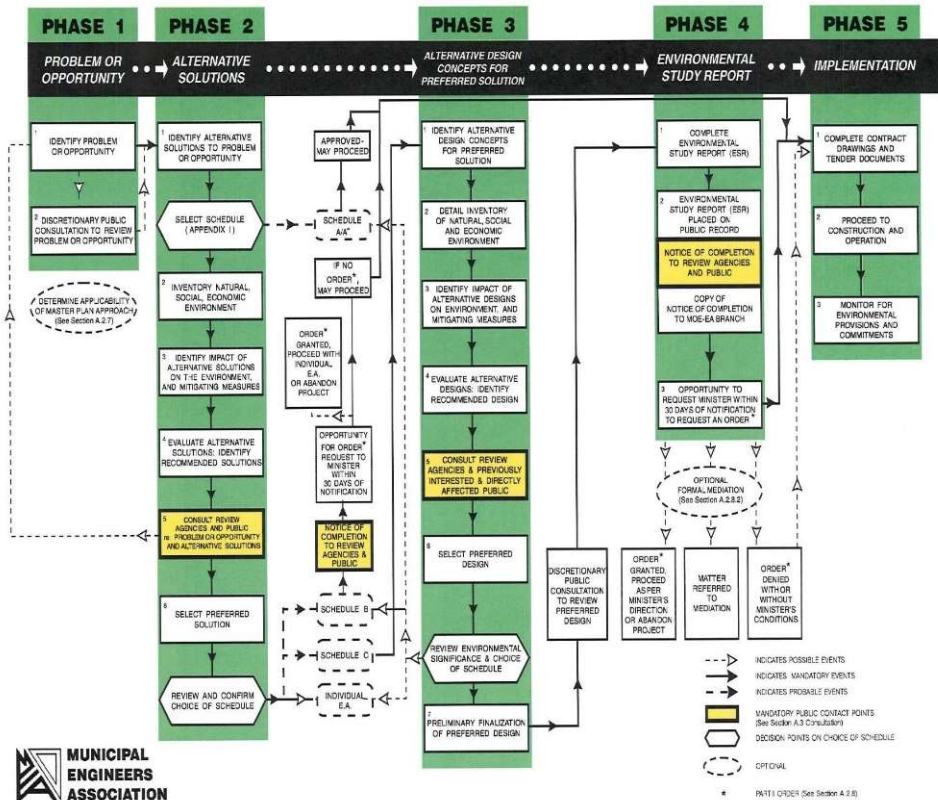
9. Construction of new maintenance facilities in or adjacent to residential land-use or an environmentally-sensitive area including natural heritage features, cultural heritage and archaeological resources, recreational or other sensitive land-uses.

10. Construction of new Transit System i.e. involving construction of new infrastructure.

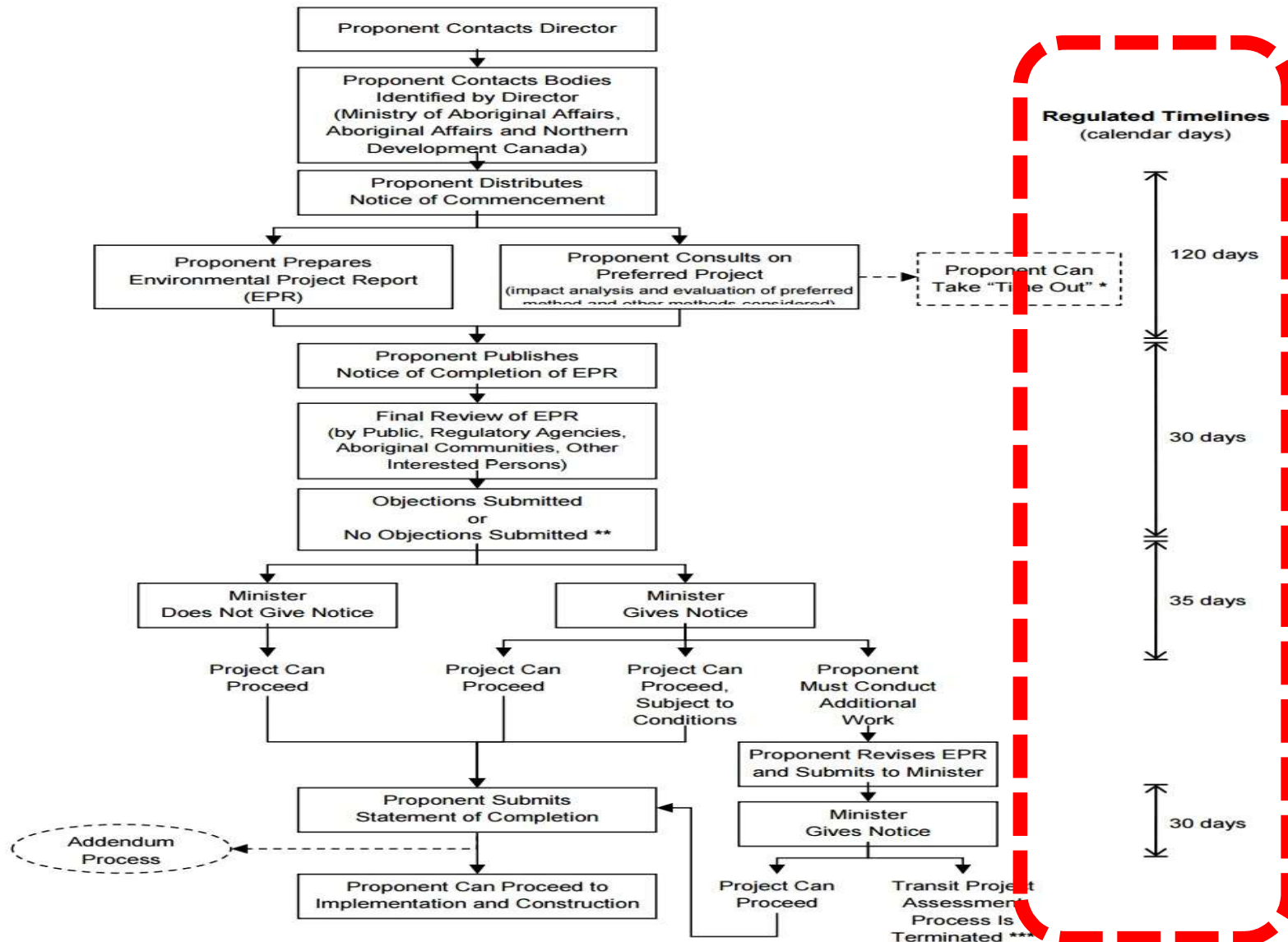
**All other Transit projects Exempt**

# MCEA vs O Reg 231/08 Process

NOTE: This flow chart is to be read in conjunction with Part A of the Municipal Class EA



# MCEA vs O Reg 231/08 Process





# Pre-Planning Activities

## **Before starting the transit project assessment process:**

- Contact the ministry to obtain the name of a ministry representative who can assist, coordinate, or provide guidance about potential/expected requirements of the transit project assessment process (project officer from the Environmental Approvals Branch)
- Prepare a consultation plan(s)/strategy(ies) and seek input on the best methods for consulting with Aboriginal communities, adjacent property owners, regulatory agencies, municipalities
- Start pre-notification and pre-consultation activities with Aboriginal communities, adjacent property owners, regulatory agencies, municipalities
- Identify potential issues that may be considered provincially important
- Identify issues that may be of particular interest to Aboriginal communities
- Identify potential federal environmental assessment and other federal regulatory requirements
- Respond to issues and concerns that may be raised during pre-consultation
- Provide opportunities for Aboriginal communities, adjacent property owners, regulatory agencies, municipalities to review any draft methodologies, approaches, results of any studies, documentation, etc.



# Pre-Planning Activities

- Conduct studies in respect of the transit project (see section 3.4, What types of studies would be required for a public transit project?)
  - Identify existing baseline environmental conditions
  - Identify environmental and land use constraints
  - Identify project-specific location or alignment
  - Identify parking strategies, infrastructure, construction staging, land requirements
  - Identify station, stop, intermodal locations
  - Identify other alternative methods considered (e.g. different design alignments)
  - Identify how the transit project fits in with existing and future land uses, connects with other existing and future transportation facilities/services
  - Identify expected environmental impacts (both positive and negative) and proposed measures to mitigate potential negative impacts





# Pre-Planning Activities

- Explain and document why a potential negative impact may or may not be a negative impact on a matter of provincial importance or on a constitutionally protected Aboriginal or treaty right
- Prepare a preliminary draft of the Environmental Project Report and provide to persons who may be interested, including Aboriginal communities, adjacent property owners, regulatory agencies, municipalities
- Prepare a proposed project schedule for conducting the transit project assessment process, identifying opportunities for interested persons (Aboriginal communities, adjacent property owners, regulatory agencies, municipalities) to review and comment on any impact assessment documentation and design mitigation measures prepared by the proponent
- Go to municipal council with a draft Environmental Project Report
- Establish a transit project website

# MCEA vs O Reg 231/08 Process

## MCEA Schedule C

Problem Statement  
**Notice of Commencement**  
 Inventory Environment  
 Evaluate Alternative Solutions

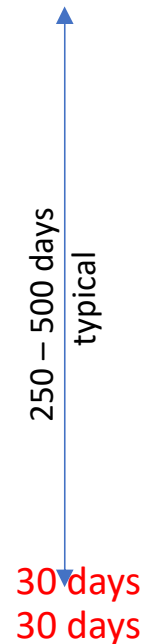
**Mandatory Public Input**  
**Preferred Solution**

Evaluate Alternative Designs

**Mandatory Public Input**  
**Preferred Design**

Prepare ESR  
**Notice of Completion**  
 Public Review  
 Minister Review

Timing



## O Reg 231/08

Timing

Pre-Planning Activities  
 Evaluate Alternatives  
 Consult  
 Prepare draft EPR

**Notice of Commencement**

Consult Stakeholders

**Notice of Completion**

Public Review **30 days**  
 Minister Review **35 days**  
 Statement of Completion







## **D.1.2 Definition of “Municipal Transit”**

Subsection 1(1) of Schedule 1 in the Transit Regulation refers to and relies on the definitions contained in this Class EA. For the purposes of the regulation and the transit project assessment process, “municipal transit”, includes heavy rail (subway). However, as indicated previously, the process set out in the MCEA cannot be used for transit projects that include heavy rail.



# Glossary of Transit Terms

*Ancillary Facilities*

*Heavy Rail Transit (HRT)*

*High Occupancy Vehicle (HOV)*

*Intelligent Transportation Systems (ITS)*

*Intermediate Capacity Transit System (ICTS)*

*Linear Component of a Transit System*

*Park and Ride Lot*

*Transit Loop*

*Transit Project*

*Transit Station/Terminal*

*Transit Stop*

*Transit System*

*“Same Purpose, Use and Location”*



# **EA Approval for Municipal Transit**

**MCEA – Transit  
or  
Ontario Regulation 231/08  
Which Process When?**



## **MCEA – Transit vs O Reg 231/08**

In 2007, the Municipal Transit Projects Chapter was added to the MCEA. This provided municipalities with a streamlined process for planning and implementing transit projects under the EAA.

In 2008, Ontario Regulation 231/08, Transit Projects and Metrolinx Undertakings made under the EAA came into effect, providing an alternative streamlined assessment process for transit projects to that in this class environmental assessment.



## MCEA – Transit vs O Reg 231/08

In accordance with subsection 2(6) of the Transit Regulation proponents must provide written notice to the Director of the Environmental Assessment Branch and the appropriate Regional Director of the ministry if they intend to proceed with the process set out in the MCEA where the transit assessment process otherwise applies. The notice must clearly state that the proponent intends to proceed with their undertaking pursuant to the MCEA process.

**Choose MCEA – Transit**  **Notice to MECP**



## **When 231/08 vs MCEA?**

For those transit projects that will involve mixed uses (i.e. cars and public transit) or will involve other infrastructure projects that are not part of the dedicated transit project, proponents are required to proceed with their undertaking pursuant to the MCEA.

**Example – Constructing a new road for cars with transit lanes must follow MCEA**



## **When 231/08 vs MCEA?**

If a proponent gives notice that it intends to follow the MCEA process and the project fits within a project description in the MCEA that is not classified as exempt, the project is not exempt from Parts II and II.1 of the EAA and the proponent must complete the required MCEA process.





## **When 231/08 vs MCEA?**

Proponents should also note that, while efforts have been made to update the MCEA to align with the Transit Regulation in terms of the classification of projects in the MCEA, there may be differences in terms of the exemption of projects between the MCEA and the Transit Regulation. Proponents must have regard to the specific provisions of the process they are following.



## **When 231/08 vs MCEA?**

Transit projects that include heavy rail cannot proceed pursuant to the MCEA but rather must proceed pursuant to the Transit Assessment Process set out in the Transit Regulation.

Further questions TPAP process – MEPC's EA Branch

# MCEA Users Guide – Table C

OPERATIONAL AND MAINTENANCE ACTIVITIES				
<p>1 Normal or emergency operation and maintenance of linear paved facilities, cycling lanes/facilities &amp; multi-purpose paths, sidewalks, parking lots and related facilities located within or outside existing rights-of-way</p> <ul style="list-style-type: none"> <li>• <i>Related facilities include bridges</i></li> </ul> <p><i>This clause is intended to be inclusive. Operational and maintenance activities are those activities that keep the infrastructure in good condition and safe for the intended use by the public. Related facilities include bridges and freeways and any other infrastructure located in the road allowance</i></p>	A			

**Black font – 2023 MCEA**  
**Green font – MEA's User Guide Advice**

# Appendix 1 – Transit

## Maintenance and Service Operation

1 General maintenance of all transit-related facilities including but not limited to:

- Normal or emergency operation and maintenance of transit facilities and related facilities
- Resurfacing, patching and frost heave treatment with no change in footprint
- Rehabilitation and internal modifications to existing buildings and facilities
- Plowing and sanding of transit facilities and related facilities
- Shaping and cleaning of existing roadside ditches and culverts
- Parking lot and lighting rehabilitation;
- Building rehabilitation or replacement;
- Facility surveillance, control systems; etc.
- Snow and de-icing operations that comply with MECP's Guidelines

### **Exempt - Schedule A**

○ Reg 231/08 also exempts all work included with this project type

# Appendix 1 – Transit

## Maintenance and Service Operation

**2** General service operations provisions including but not limited to:

- Service Changes and Operational Changes on existing routes;
- Temporary service to special events on non-regular routes;
- Short-term changes to existing routes (both mode and location);
- New, extended or expanded bus routes on existing roads

### **Exempt - Schedule A**

○ Reg 231/08 also exempts all work included with this project type

# Appendix 1 – Transit

## Maintenance and Service Operation

**3** New, extended or expanded transit stops (including roadside shelters on road bays and platforms)

### **Exempt - Schedule A**

○ Reg 231/08 also exempts all work included with this project type

# Appendix 1 – Transit

## Modification and Reconstruction of Existing Facilities

**4a** Construction of localized operational improvements at specific locations (i.e. stopping lanes, access lanes, turning lanes, queue jump lanes, and roadway access ramps etc) with no or minimal adverse environmental effects

### **Exempt - Schedule A+**

○ Reg 231/08 also exempts all work included with this project type

**4b** Construction of localized operational improvements at specific locations (i.e. stopping lanes, access lanes, turning lanes, queue jump lanes, and roadway access ramps etc) with the potential for some adverse environmental effects

### **Schedule B Difference**

○ Reg 231/08 exempts all work included with this project type



# Appendix 1 – Transit

## Modification and Reconstruction of Existing Facilities

**5** Installation, construction or reconstruction of traffic control devices (i.e. signing, signalization)

**6** New Intelligent Transportation System elements for transit systems (e.g. signal priority for transit)

**7** Installation of safety projects (i.e. lighting, glare screens, safety barriers, energy attenuation)

### **Exempt - Schedule A+**

O Reg 231/08 also exempts all work included with these project types

# Appendix 1 – Transit

## Modification and Reconstruction of Existing Facilities

**8a** Culvert repair or replacement where the capacity of the culvert is not increased beyond the minimum municipal standards or capacity required to adequately drain the area, whichever is greater and where there is no change in drainage area

### **Exempt - Schedule A**

O Reg 231/08 also exempts all work included with this project type

**8b** Culvert repair or replacement where the capacity of the culvert or drainage area is changed

### **Exempt - Schedule A+ Difference**

Designated by O Reg 231/08 as requiring an EA process

# Appendix 1 – Transit

## Modification and Reconstruction of Existing Facilities

**9a** Reconstruction of water crossing where the reconstructed facility will be for the same purpose, use, capacity and at the same location as the facility being reconstructed (capacity refers to hydraulic capacity)

### **Exempt - Schedule A+**

O Reg 231/08 also exempts all work included with this project type

**9b** Reconstruction of water crossing where the reconstructed facility will not be for the same purpose, use, capacity and at the same location as the facility being reconstructed (capacity refers to hydraulic capacity)

### **Schedule B**

Designated by O Reg 231/08 as requiring an EA process

# Appendix 1 – Transit

## Modification and Reconstruction of Existing Facilities

**10a** Reconstruction of linear components of a transit system where the reconstructed facility will be for the same purpose, use, and at the same location as the facility being reconstructed (e.g. resurfacing of an existing Reserved Bus Lane (RBL) or reconstruction of existing streetcar track)

### **Exempt - Schedule A+**

○ Reg 231/08 also exempts all work included with this project type

# Appendix 1 – Transit

## Modification and Reconstruction of Existing Facilities

**10b** Reconstruction, widening or expansion of linear components of a transit system where the reconstructed facility will not be for the same purpose, use, and at the same location as the facility being reconstructed (e.g. a change from an existing Reserved Bus Lane (RBL) that is separated from general purpose lanes by signage and pavement markings only to a Reserved Bus Lane (RBL) in an exclusive right-of-way (i.e. physically separated from general purpose lanes)

### **Schedule C**

Designated by O Reg 231/08 as requiring an EA process

# Appendix 1 – Transit

## Modification and Reconstruction of Existing Facilities

**11** Redesignation of an existing General Purpose Lane (GPL) or High Occupancy Vehicle (HOV) lane to a transit lane through signage and pavement marking modifications (i.e. not requiring physical construction)

### **Exempt - Schedule A+**

○ Reg 231/08 also exempts all work included with this project type

**12** Reconstruction of linear components of a transit system for different vehicle technology where there is no change in footprint or general purpose traffic operations

### **Schedule B Difference**

○ Reg 231/08 exempts all work included with this project type

# Appendix 1 – Transit

## Modification and Reconstruction of Existing Facilities

**13** Reconstruction of stations, maintenance/storage facilities, passenger pick-up/drop off areas (e.g. Kiss and Ride), park and ride lots, etc. where no land acquisition is required

**14** Expansions, improvements and modifications to existing stations, maintenance and storage facilities, passenger pick-up/drop off areas (e.g. Kiss and Ride), park and ride lots, etc

### **Exempt - Schedule A**

○ Reg 231/08 also exempts all work included with these project *types*



# Appendix 1 – Transit

## Construction of New Facilities

**15a** Construction of new stations **not** in or adjacent to residential land-use or an environmentally sensitive area including natural heritage features, cultural heritage and archaeological resources, recreational or other sensitive land uses

O Reg 231/08 also exempts all work included with this project type

### **Exempt - Schedule A**

**15b** Construction of new stations in or adjacent to residential land-use or an environmentally sensitive area including natural heritage features, cultural heritage and archaeological resources, recreational or other sensitive land uses

### **Schedule B**

Designated by O Reg 231/08 as requiring an EA process

# Appendix 1 – Transit

## Construction of New Facilities

**16a** Construction of new passenger pick-up/drop off areas (e.g. kiss and ride), and park and ride lots **not** in or adjacent to residential land-use or an environmentally sensitive area including natural heritage features, cultural heritage and archaeological resources, recreational or other sensitive land-uses

**Exempt - Schedule A+**

○ Reg 231/08 also exempts all work included with this project type

# Appendix 1 – Transit

## Construction of New Facilities

**16b** Construction of new passenger pick-up/drop off areas (e.g. kiss and ride), and park and ride lots in or adjacent to residential land-use or an environmentally sensitive area including natural heritage features, cultural heritage and archaeological resources, recreational or other sensitive land-uses

### **Schedule B**

Designated by O Reg 231/08 as requiring an EA process

# Appendix 1 – Transit

## Construction of New Facilities

**17** Widening of an existing road to create new transit lanes for bus or light rail

### **Schedule C**

Designated by O Reg 231/08 as requiring an EA process

**18** Construction of a new electrical substation associated with an existing transit facility

### **Exempt - Schedule A+**

O Reg 231/08 also exempts all work included with this project type

# Appendix 1 – Transit

## Construction of New Facilities

**19** Construction of a transit loop

**Exempt - Schedule A+**

O Reg 231/08 also exempts all work included with this project type

**20** Construction of new grade separation

**Schedule C**

Designated by O Reg 231/08 as requiring an EA process

# Appendix 1 – Transit

## Construction of New Facilities

**21a** Construction of new maintenance facilities **not** in or adjacent to residential land- use or an environmentally sensitive area including natural heritage features, cultural heritage and archaeological resources, recreational or other sensitive land-uses

**Exempt - Schedule A**

O Reg 231/08 also exempts all work included with this project type

# Appendix 1 – Transit

## Construction of New Facilities

**21b** Construction of new maintenance facilities in or adjacent to residential land-use or an environmentally sensitive area including natural heritage features, cultural heritage and archaeological resources, recreational or other sensitive land-uses

### **Schedule C**

Designated by O Reg 231/08 as requiring an EA process



# Appendix 1 – Transit

## Construction of New Facilities

**22a** Construction of new storage facilities **not** in or adjacent to residential land-use or an environmentally sensitive area including natural heritage features, cultural heritage and archaeological resources, recreational or other sensitive land-uses

**Exempt - Schedule A+**

O Reg 231/08 also exempts all work included with this project type

# Appendix 1 – Transit

## Construction of New Facilities

**22b** Construction of new storage facilities in or adjacent to residential land-use or an environmentally sensitive area including natural heritage features, cultural heritage and archaeological resources, recreational or other sensitive land-uses

### **Schedule B**

Designated by O Reg 231/08 as requiring an EA process

# Appendix 1 – Transit

## Construction of New Facilities

**23** Construction of a new Transit System i.e. involving construction of new infrastructure. (For implementation of new transit services not requiring construction of new infrastructure i.e. using existing roads see Project # 2.)

### **Schedule C**

Designated by O Reg 231/08 as requiring an EA process

# Appendix 1 – Transit

## Miscellaneous Projects

**24** Construction of noise barriers (i.e. structures such as walls and berms or a combination of the two)

**25** New fence installations not associated with another project

**26** Utility removal, modification or relocation for safety, operational or aesthetic purposes

**27** Restoration of a facility immediately after a natural or man-made disaster provided the facility is for the same purpose, use, and at the same location

### **Exempt - Schedule A**

○ Reg 231/08 also exempts all work included with these project types

# Appendix 1 – Transit

## Miscellaneous Projects

**28** Temporary, not permanent, activity with a defined duration and with the intent to go back to the original condition, unless it is determined to make it a permanent condition which would have to be approved through the Class EA process where applicable

### **Exempt - Schedule A**

**29** Decommissioning of existing major transit facilities (i.e. facilities requiring construction activities for decommissioning)

### **Exempt - Schedule A+**

○ Reg 231/08 also exempts all work included with these project *types*



# Questions?



# WEBINAR

MCEA 2023 Appendix 1 – Roads	May 12 2023
MCEA 2023 Appendix 1 – W/WW	May 15 2023
MCEA 2023 Appendix 1 – Transit	Oct 25, 2023
Heritage Bridge Checklist	May 16 2023
Archeology Screening Process (ASP)	Oct 24, 2023
MCEA 2023 Part A	Oct 25, 2023
Intro to MCEA Workshop	Oct 17-19, 2023
Collector Road Screening Process	Oct 24, 2023
MCEA Annual Fall Update	Oct 24, 2023

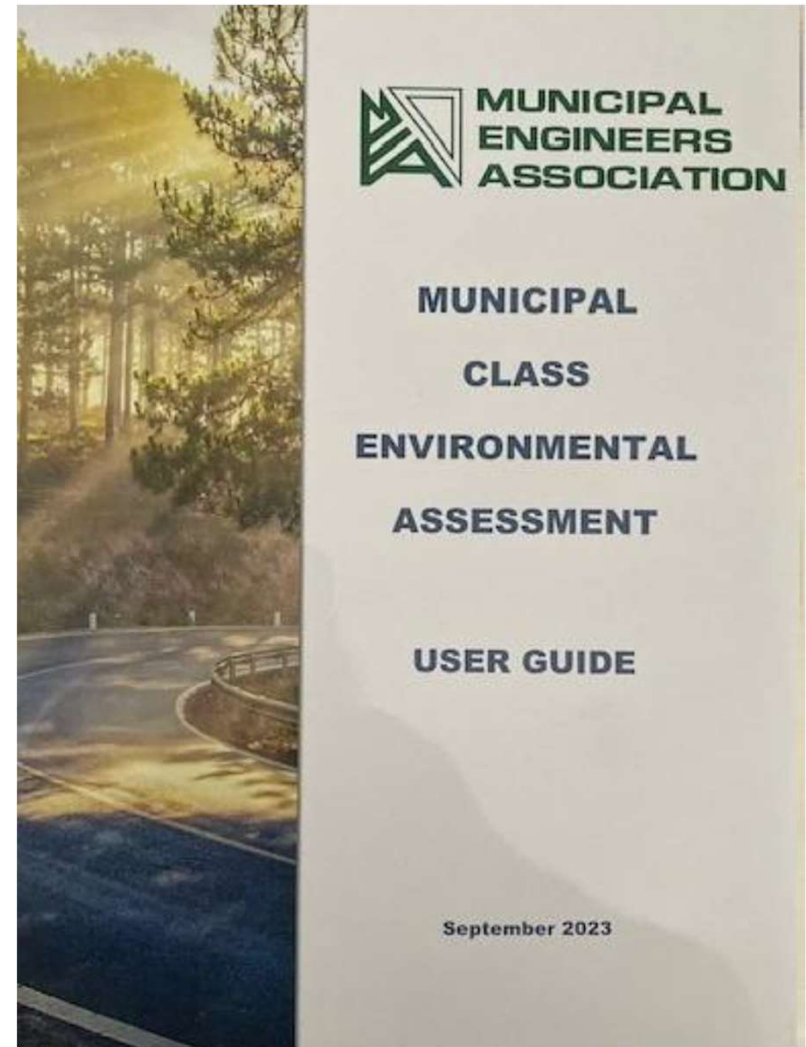




# MUNICIPAL ENGINEERS ASSOCIATION



The MEA is pleased to announce it has published a new Municipal Class Environmental Assessment (MCEA) User Guide (September 2023). It provides practitioners with useful information, advice, and interpretation of the MCEA. You can purchase the new user guide via the QR code below:



<https://municipalclassea.ca/access/login.html?redirect=%2Fmanual-purchase.html>

**MUNICIPAL  
ENGINEERS  
ASSOCIATION**



# Questions

[www.MunicipalEngineers.on.ca/Resources/Ask-An-Expert](http://www.MunicipalEngineers.on.ca/Resources/Ask-An-Expert)

[www.municipalclassea.ca](http://www.municipalclassea.ca)